



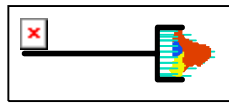
*SUREPATH*<sup>™</sup>  
*test pack*

*TRiPATH*  
*care technologies™*

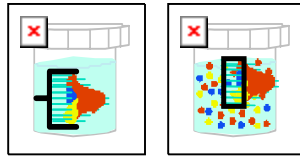
# *SUREPATH*<sup>TM</sup> *test pack*

- Formerly known as AutoCyte<sup>®</sup> PREP
- SurePath<sup>TM</sup> slides are intended as replacements for conventional gynecologic Pap smears.

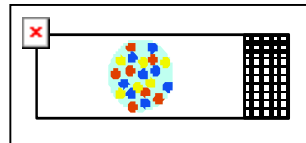
## CELL COLLECTION METHOD



1. Sample taken using broom-like device (e.g. Rovers Cervex-Brush<sup>®</sup>)



2. Brush with 100% of collected cells directly placed in preservative and transported to laboratory\*



3. Homogeneous cell presentation on slide

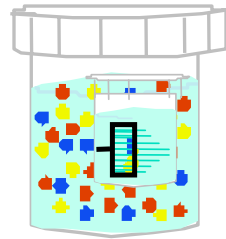
\*Hutchinson M, Patton FW, Stelzer GT, et al. Study of cell loss in the conventional Papincolaou smear. Acta Cytol 1992;26:577

# SUREPATH™

test pack

## SLIDE FOR CERVICAL CYTOLOGY SCREENING

Homogeneous Sample



SurePath™ Slide

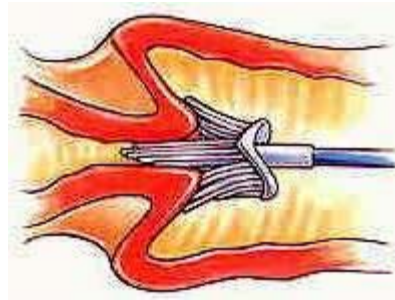


# SUREPATH™

test pack

## 3 EASY STEPS

1



Collect

2



Transfer

3



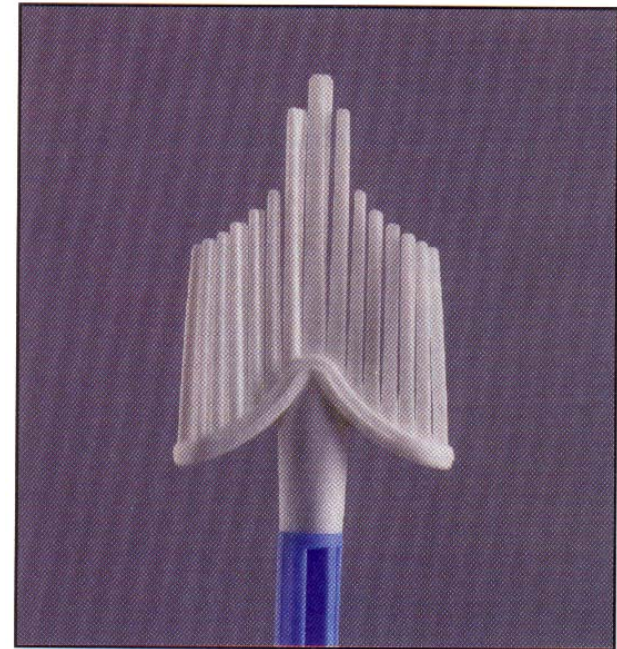
Send

# SUREPATH™

*test pack*

## THE ROVERS CERVEX-BRUSH®\*

- FDA approved for use with SUREPATH™ *test pack*
- Excellent endocervical cell recovery when used properly
- Detachable head
- Standardizes sample collection

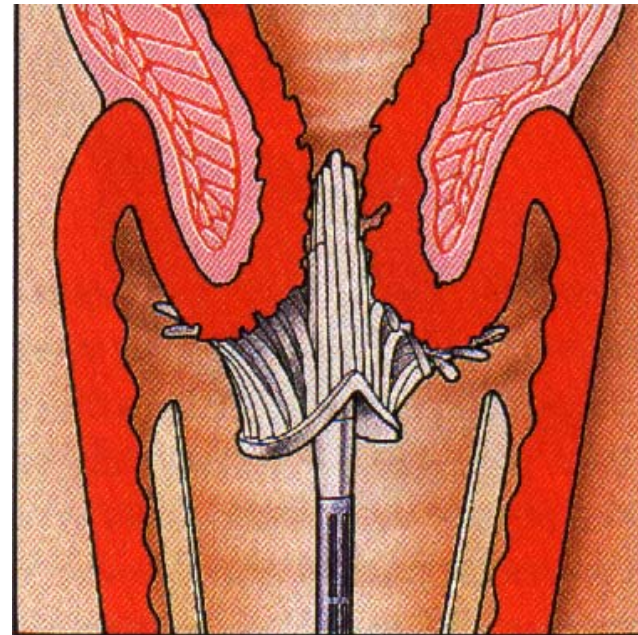


\*Rovers Medical Devices BV, Lekstraat 10, 5347 KV Oss, The Netherlands

TRiPATH™  
*care technologies™*

## THE ROVERS CERVEX-BRUSH<sup>®\*</sup>

- Insert broom into cervical os
- Using firm, but gentle pressure, rotate broom 5 times in a clockwise direction
- Note that bristles should splay against ectocervix

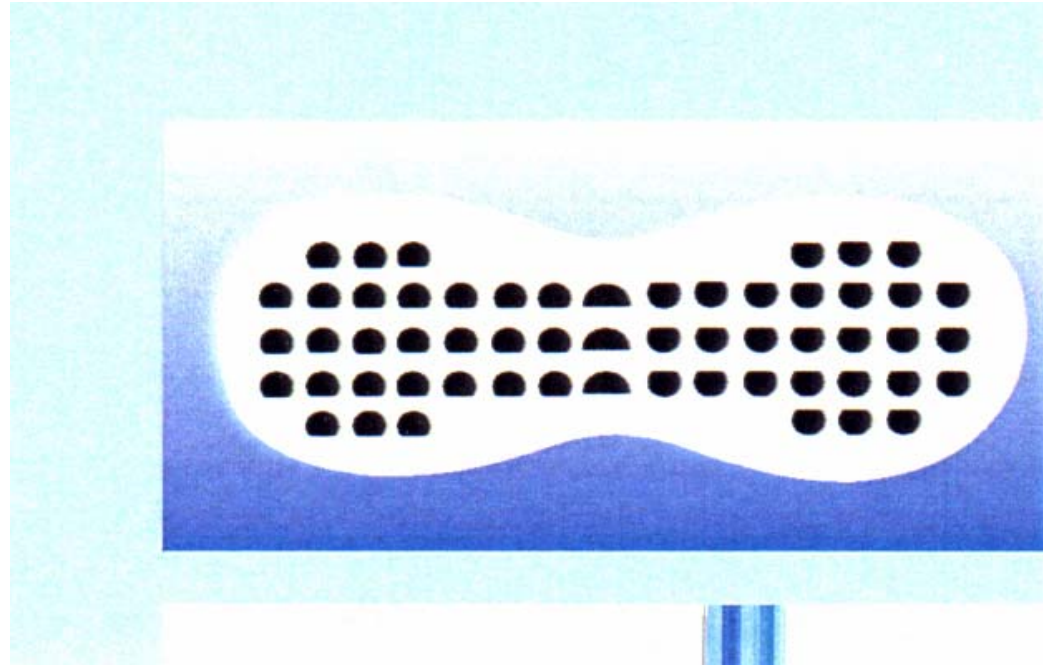


\*Rovers Medical Devices BV, Lekstraat 10, 5347 KV Oss, The Netherlands

# SUREPATH™

test pack

## ROVERS CERVEX-BRUSH® CROSS SECTION OF BRISTLES\*



\*Rovers Medical Devices BV, Lekstraat 10, 5347 KV Oss, The Netherlands

TRiPATH  
care technologies™

# SUREPATH™

test pack

## IMPROVEMENTS

### Conventional



Clinician Collects/Prepares Sample



### SurePath™



Clinician Collects Sample  
Places Device in SurePath™ Vial



Manual Batch Staining

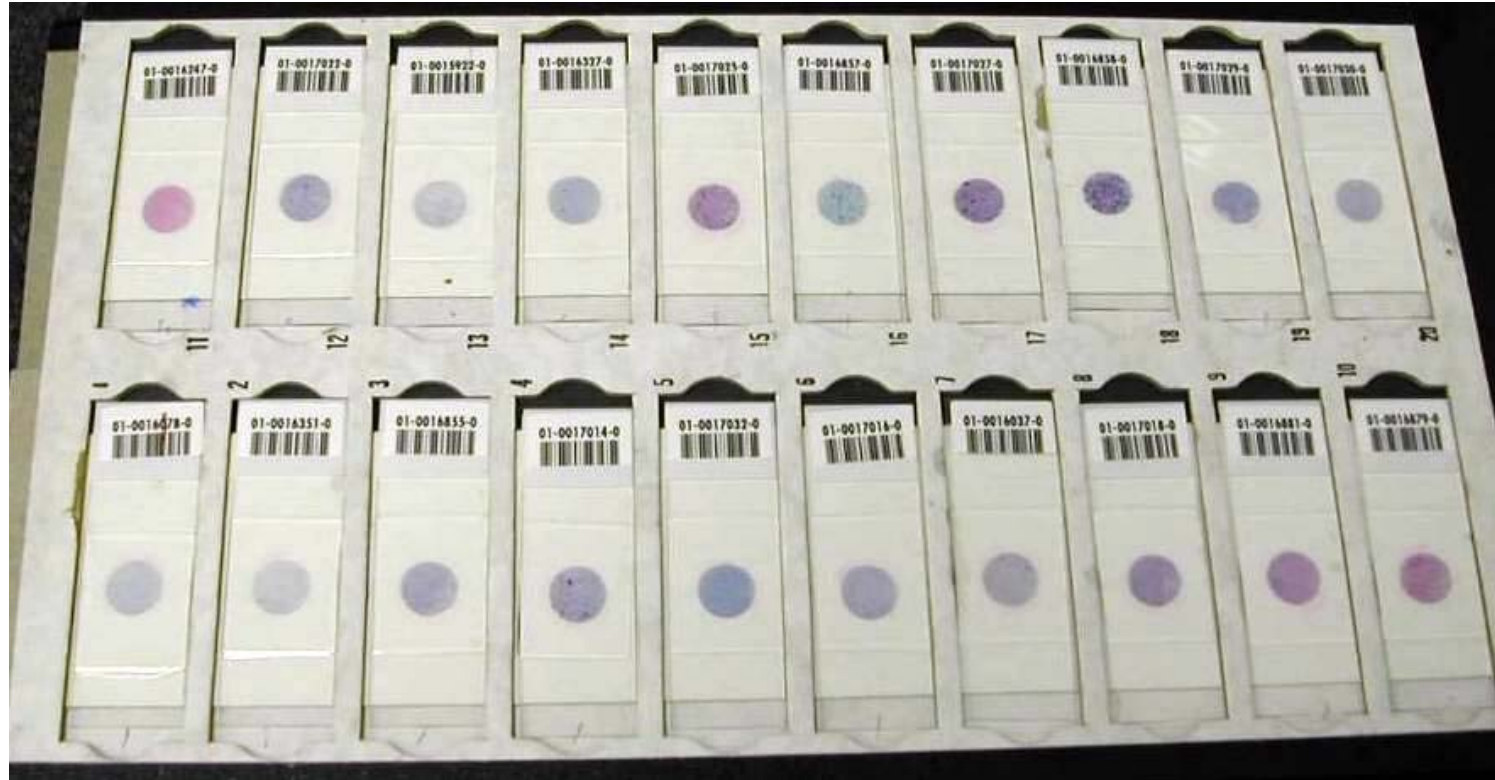


PrepStain™ Processes  
SurePath™ slide

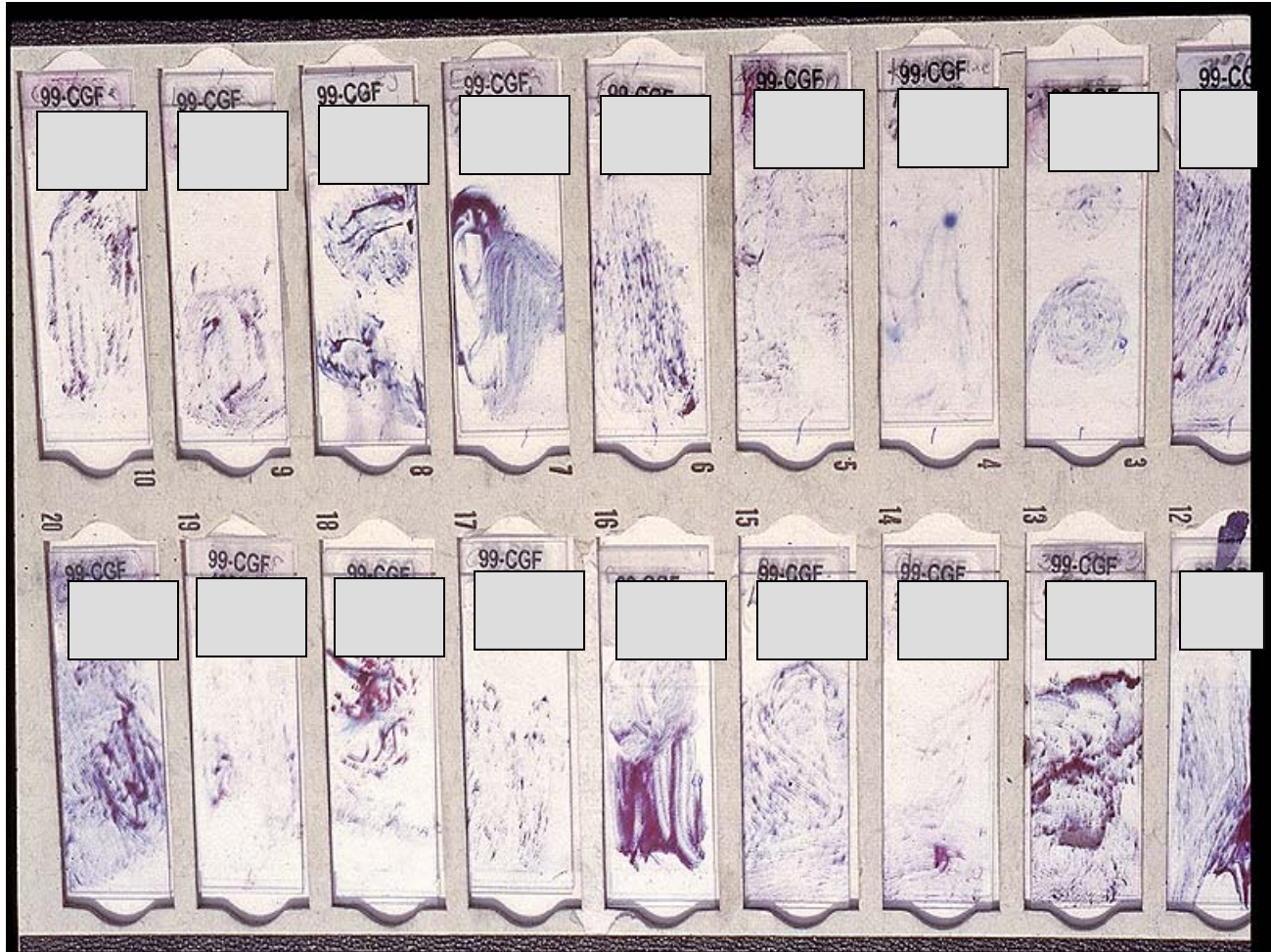
# SUREPATH™

test pack

## A TRAY OF SUREPATH™ SLIDES



# A TRAY OF CONVENTIONAL SLIDES



# SUREPATH™

test pack

## PRESERVATIVE\*

- Contains 24% ethanol
- Stable for 36 months from date of manufacture at room temperature
- Samples are stable in preservative for four (4) weeks at room temperature, six (6) months refrigerated



\*PrepStain™ System Product Insert, Doc. No. 61CR000011 Issue #7

TRIPATH  
care technologies™

## WHY SHOULD YOU USE SUREPATH<sup>™</sup>?

- Easy collection process
- 100% of collected sample is transferred to the vial
- Cell Enrichment Process reduces obscuring material (blood, mucus, debris)
- *Significant* reduction in Unsatisfactory and “Limited By” results\*
- Standardizes the Pap smear process from sampling through staining

\* PrepStain<sup>™</sup> Product Insert Doc. No 61CR000011, Issue #7



QUESTIONS?

*TRiPATH*  
*care technologies™*